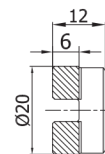
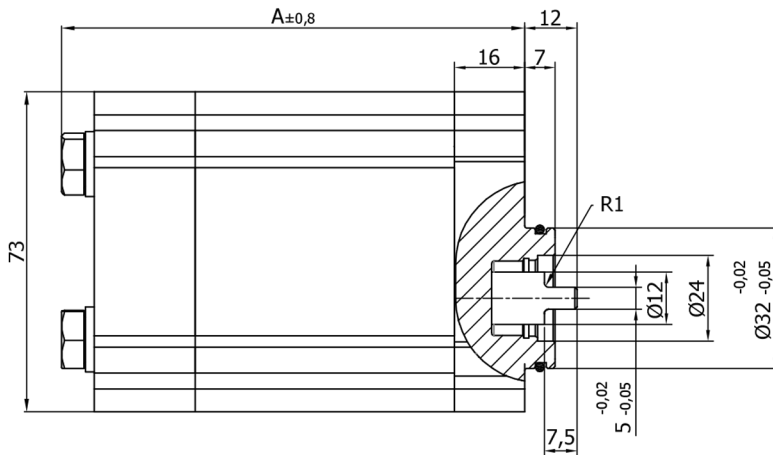
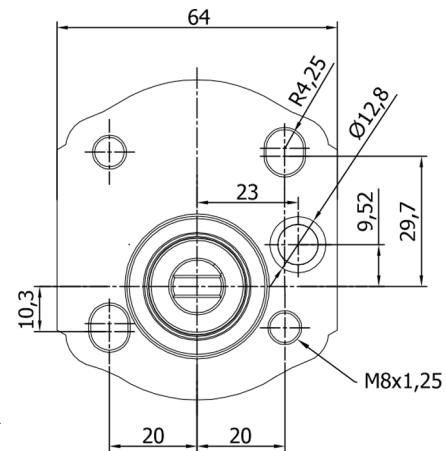




Pump Type	Displacement cm ³ /rev	Max. Pressure (bar)	Max. Speed (rpm)	Min. Speed (rpm)	A +0,4	B	Inlet			Outlet		
							C	D	E	c	d	e
APWH10.009.A/CCE01SN	0,9	220	4000	650	34,9	78,1	12	30	N6x1	12	30	N6x1
APWH10.012.A/CCE01SN	1,2				35,5	79,3						
APWH10.017.A/CCE01SN	1,7				36,5	81,3						
APWH10.023.A/CCE01SN	2,3				37,5	83,3						
APWH10.027.A/CCE01SN	2,7				38,5	85,3						
APWH10.032.A/CCE01SN	3,2				39,3	86,8						
APWH10.038.A/CCE01SN	3,8		3500	650	40,5	89,3						
APWH10.043.A/CCE01SN	4,3				41,5	91,3						
APWH10.050.A/CCE01SN	5,0				43,0	94,3						
APWH10.059.A/CCE01SN	5,9				44,8	97,8						
APWH10.063.A/CCE01SN	6,3				45,5	99,3						
APWH10.078.A/CCE01SN	7,8	210	48,5	105,3								
APWH10.095.A/CCE01SN	9,5	200	52,0	112,3								



Coupling


 ÇIKIŞ PORTU
OUTLET PORT

ORDERING CODE OF APWH10 PUMPS

APWH10 . 032/032/032 . C A B 01 S N - T

Pump Type	
APWH10	Aluminium Body Helical Gear Pump

Displacement cm ³ /rev
009 = 0,9 cm ³ /rev
012 = 1,2 cm ³ /rev
017 = 1,7 cm ³ /rev
023 = 2,3 cm ³ /rev
027 = 2,7 cm ³ /rev
032 = 3,2 cm ³ /rev
038 = 3,8 cm ³ /rev
043 = 4,3 cm ³ /rev
050 = 5,0 cm ³ /rev
059 = 5,9 cm ³ /rev
063 = 6,3 cm ³ /rev
078 = 7,8 cm ³ /rev
095 = 9,5 cm ³ /rev

Rotation
A = Counter-clockwise
C = Clockwise

Seal	
N	NBR
V	Viton

Section	
	Single
T	Tandem

Rear Cover	
S	Standard

Front Cover		
A	Square flange	Ø25,38 mm
B	2 Bolts - Centering	Ø32 mm
C	2 Bolts - Centering with Oring	Ø32 mm
F	2 Bolts - Centering	Ø32 mm
L	Square flange	Ø30 mm
N	Square flange	Ø36,47 mm

Drive Shaft		
A	Tapered key shaft	1:5
B	Tapered key shaft	1:8
E	Tang Drive Shaft	
H	Parallel shaft	

Inlet and Outlet Ports		
01		Rectangular
03		ISO 6149 thread
05		Pipe thread

- Code Example (Single) ; APWH10.032.CCE01SN - Code Example (Tandem) ; APWH10.032/032/032.CCE01SN-T